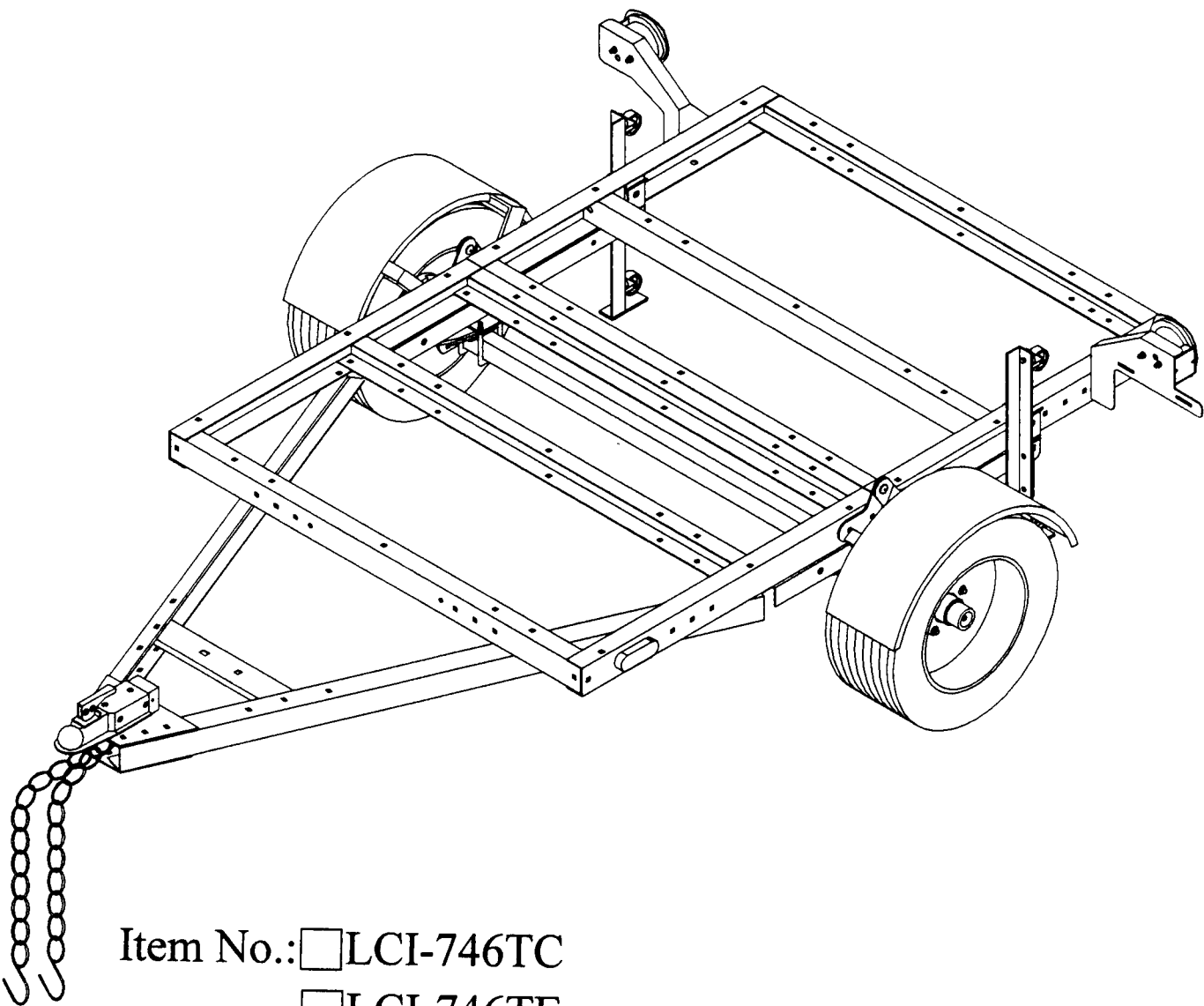


OWNER'S INSTRUCTION DIY TRAILER KIT



Item No.: LCI-746TC

LCI-746TE

LCI-746TC/TE TRAILER PARTS LIST

PARTS			HARDWARE		
NO.	Q'TY	DESCRIPTION	NO.	Q'TY	DESCRIPTION
1	1	Front Frame	A	40	3/8" x 7/8" Carriage Bolt
2	1	Rear Frame	B	59	3/8" Nylon Nut
5	2	Connecting Rail	C	59	3/8" Flat Washer
6	1	Spare Tire Bar	D	9	3/8" x 1-1/2" Carriage Bolt
7L	1	Left Spring Hanger	E	2	3/8" x 3" Bolt
7R	1	Right Spring Hanger	G	2	9/16" x 3-1/4" Bolt
8L	1	Left Caster Base	H	2	9/16" Nylon nut
8R	1	Right Caster Base	I	2	1/2" x 3-3/4" Bolt
9L	1	Left Rotation Plate	J	1	1/2" x 1" Bolt
9R	1	Right Rotation Plate	K	3	1/2" Nylon Nut
10	1	Axle	L	6	1/2" Flat Washer
11L	1	Left Fender	M	10	Wheel Nut
11R	1	Right Fender	N	1	Safety Pin
12	2	Tire & Wheel Assembly	O	2	1/2" L latch
13	4	Caster	P	2	3 mm "R" pin
14	1	Coupler	Q	1	2 mm "R" pin
15	1	Coupler Base	R	2	Grease Fitting
16	1	"T" plate	S	4	4 mm Self Tapping Screw
17	1	Safety Chain	T	2	5/32" Cotter Pin
18	2	Spring Plate	U	2	3/4" Flat Washer
19	4	3/8" U Bolt			
20	2	Slipper Spring			
21	1	Left Tail Light			
22	1	Right Tail Light			
23	1	Right Tail Light Bracket			
24	1	Left Tail Light Bracket			
25	2	Side Running Light			
26	2	Hub			
27	2	Outer Bearing			
28	2	Castle Nut			
29	2	Dust Cap			

Read the instruction carefully and follow them step-by-step for easy assembly. You'll find a complete parts list on the previous page. Average assembly time is approximately 4 hours. You'll need the following tools to assemble your Trailer Kit.

TOOLS NEEDED:

7/8" socket or lug wrench

9/16" box end wrench

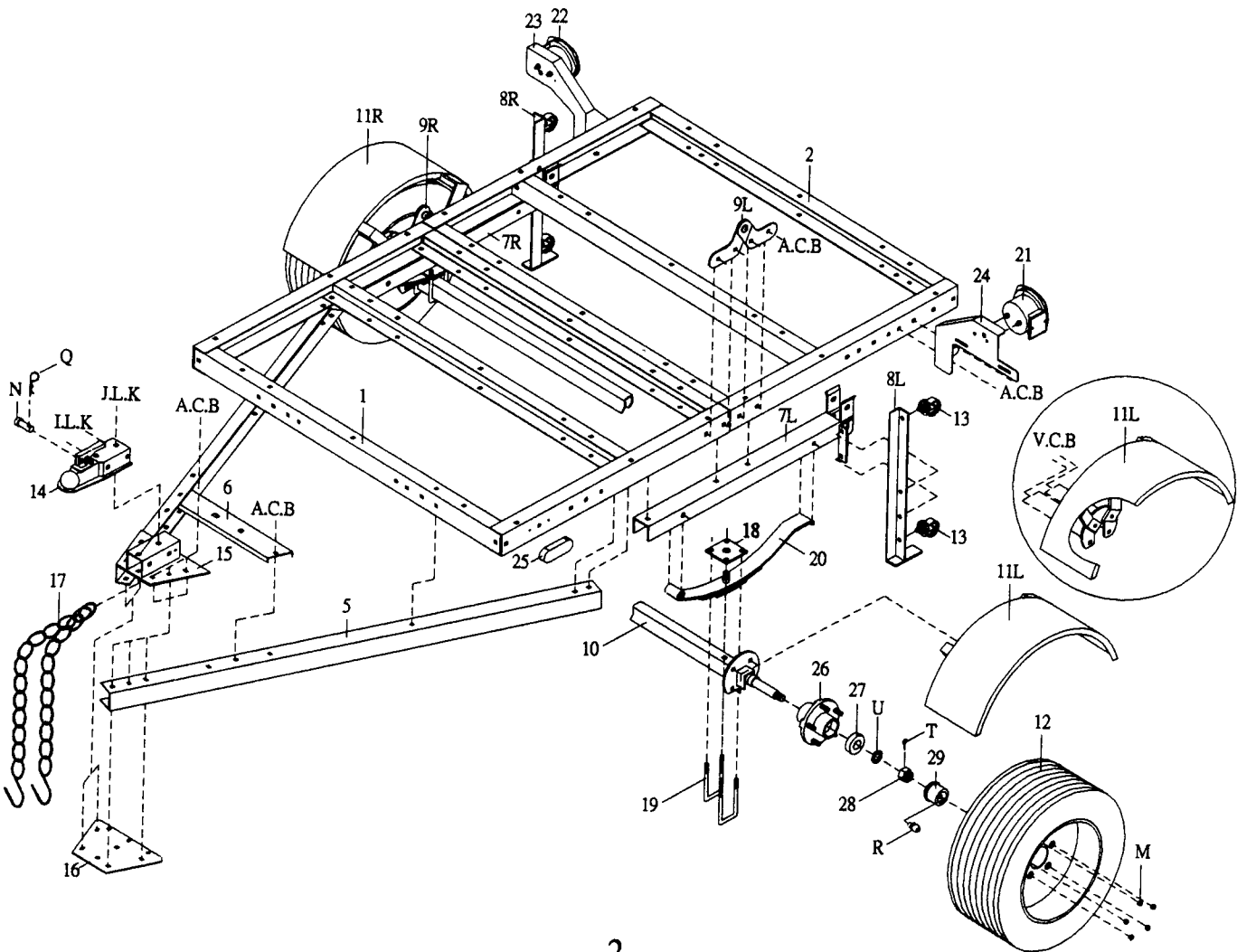
9/16" open end wrench

plier

screwdriver

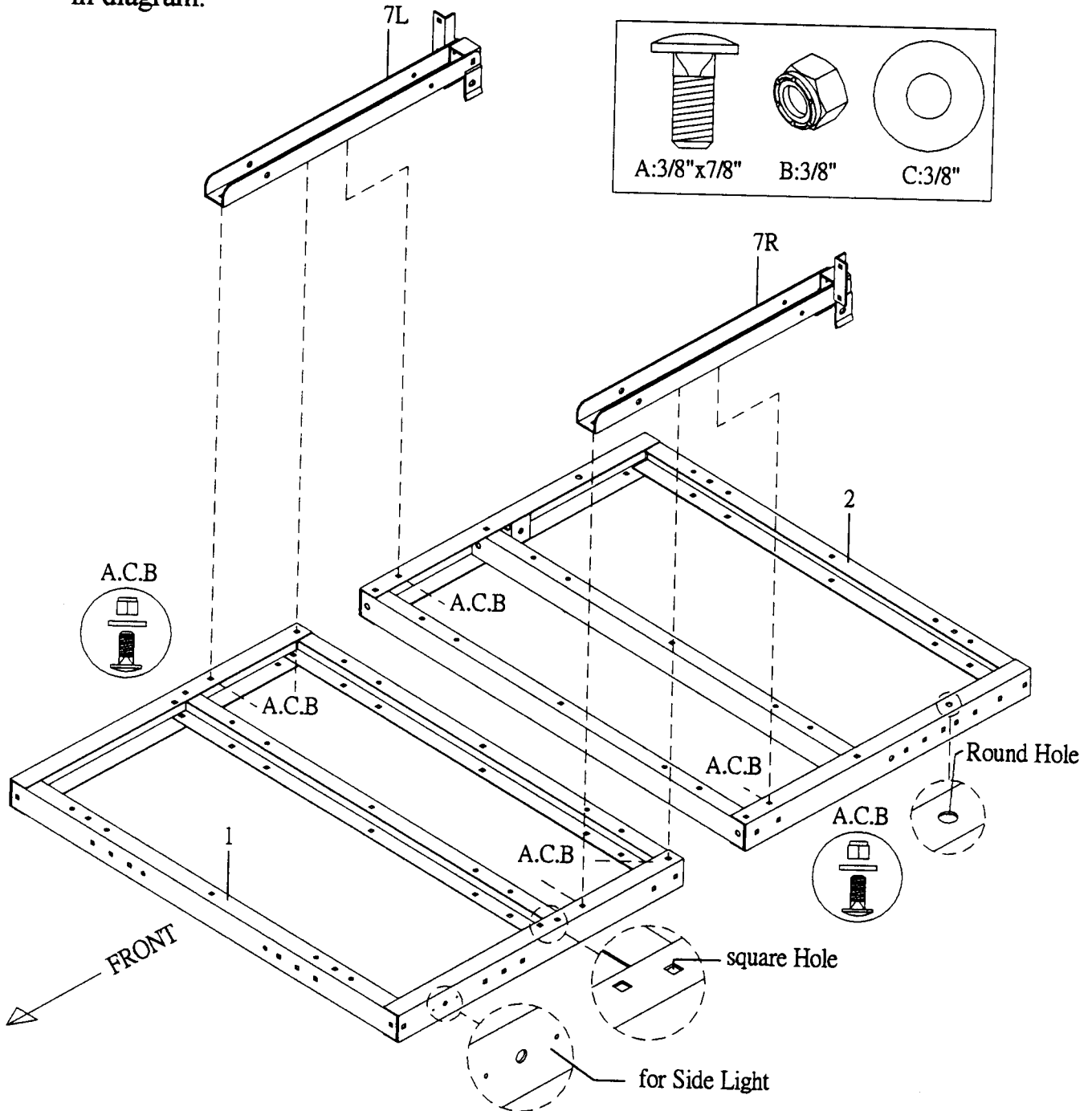
NOTE:

1. In assembling trailer parts, they are identified by standing at rear of Trailer and looking toward tongue.
2. Do not fully tighten bolts & nuts until the Trailer frames are completely assembled.
3. Periodically check all bolts and nuts for tightness, tighten as necessary.



STEP 1

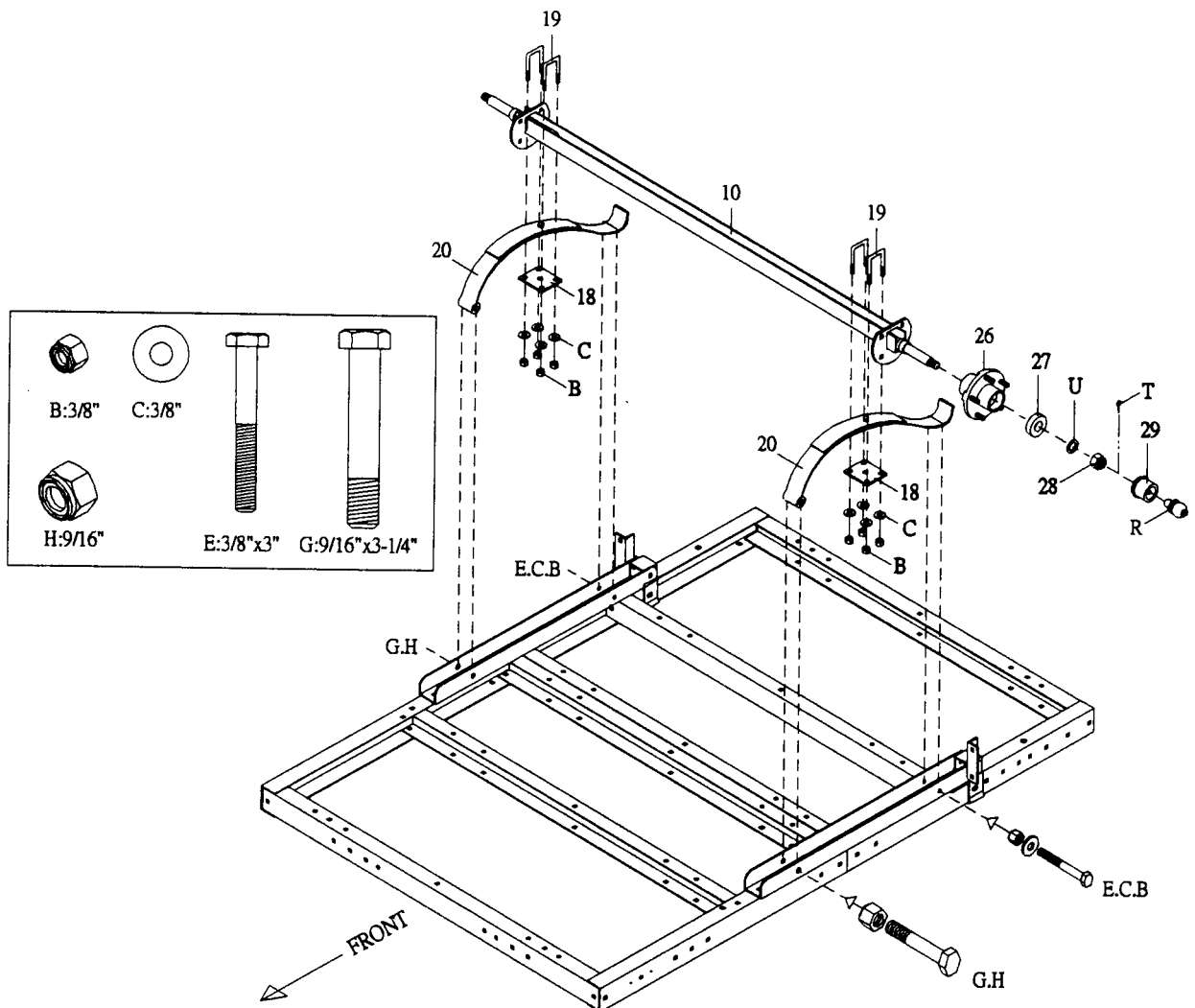
1. The Trailer's assembly from Step one to Step three are upside down.
2. NOTE: Before assembly, please see the diagram to identify the front and rear frame (1, 2), and the direction of the bolts (A).
3. Assemble front & rear frame (1, 2) and left & right spring hanger (7L, 7R) by using 3/8" x 7/8" carriage bolts (A), 3/8" flat washers (C) and 3/8" nylon nuts (B), as shown in diagram.



STEP 2

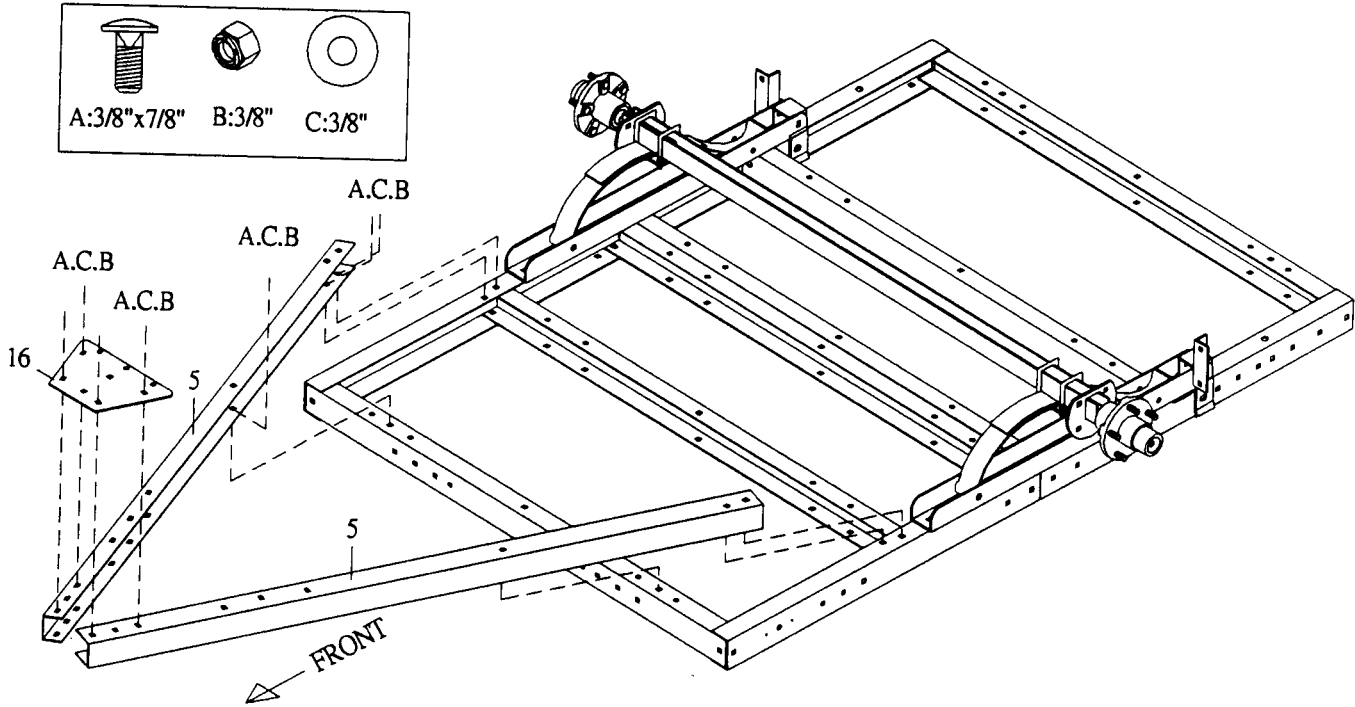
1. Put slipper springs (20) on left and right spring hangers (7L, 7R) with spring eyes forward, secure with 9/16" x 3-1/4" bolts (G) & 9/16" nylon nut (H) (FRONT), and 3/8" x 3" bolts (E), 3/8" flat washers (C) and 3/8" nylon nuts (B)(REAR), as shown in diagram.(DO NOT OVERTIGHT)
2. Place axle (10) on top of slipper springs (20), the bolt head of slipper springs insert to both holes on axle.
3. Put spring plates (18) under slipper spring, using 3/8" "U" bolt (19) pass through axle (10), slipper springs (20) and spring plates (18), then lock with 3/8" flat washers (C) and 3/8" nylon nuts (B).
4. Install hubs (26) on spindles by sliding hub (wheel studs pointed outward) over spindle. Slide outer bearing (27) onto spindle and into bearing cup in hub. Secure hub with 3/4" flat washer (U) and castle nut (28), tighten them snugly.
5. NOTE: Back off castle nut slightly a litter bit so that hub can spin freely!
6. Insert 5/32" cotter pin (T) through the hole in spindle and bend pin over to lock. Gently tap dust cap (29) over hub opening until flange on cap seats on hub surface. Fix grease fitting (R) on dust cap (29).

CAUTION: Periodically grease the seal on the backside of each Wheel Hub.



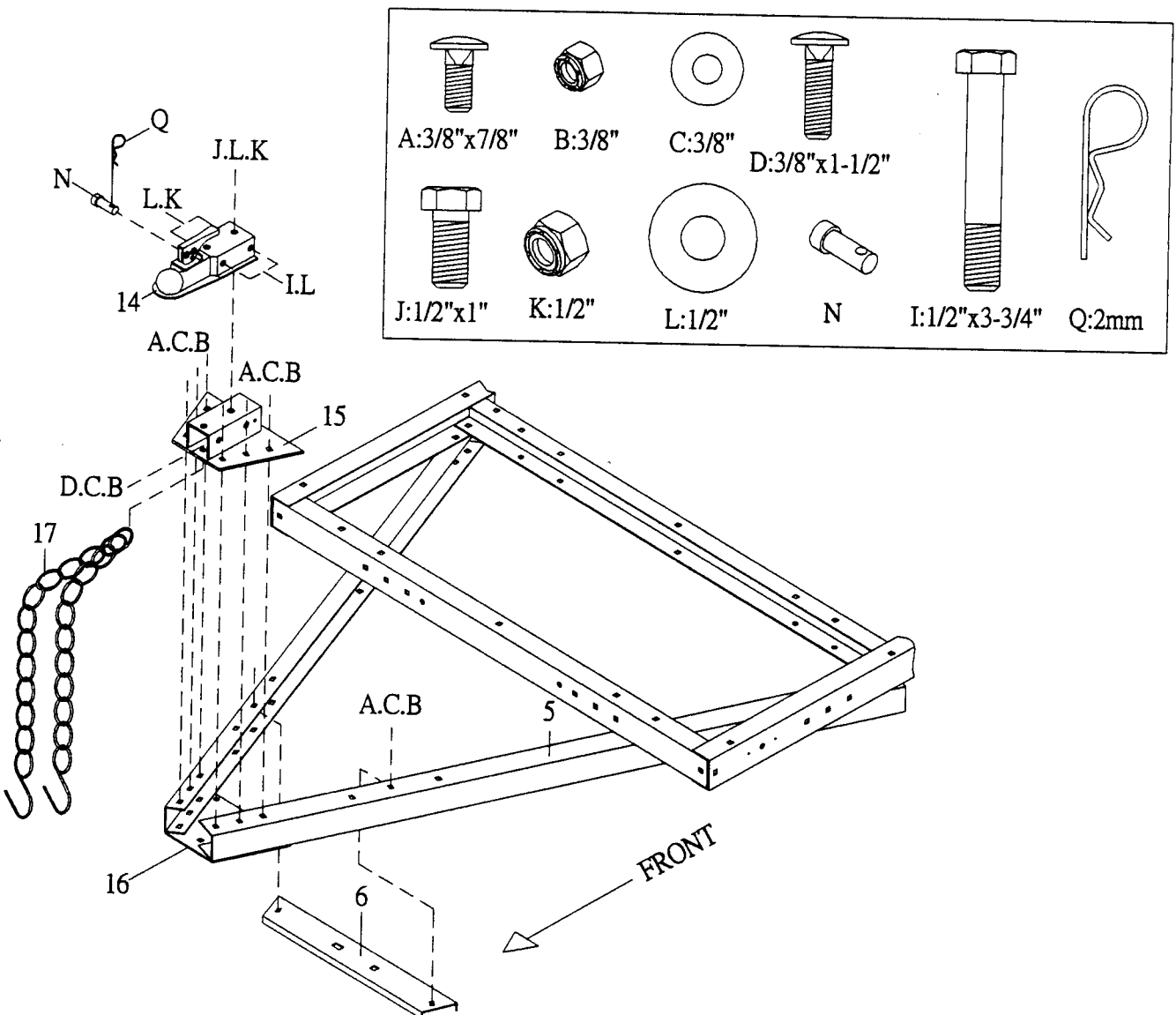
STEP 3

1. Attach connecting rails (5) to side and front rails of the front frame (1) by using 3/8" x 7/8" carriage bolts (A), 3/8" flat washers (C) and 3/8" nylon nuts (B).
2. Attach "T" plate (16) to connecting rails (5) by using 3/8" x 7/8" carriage bolts (A), 3/8" flat washers (C) and 3/8" nylon nuts (B).



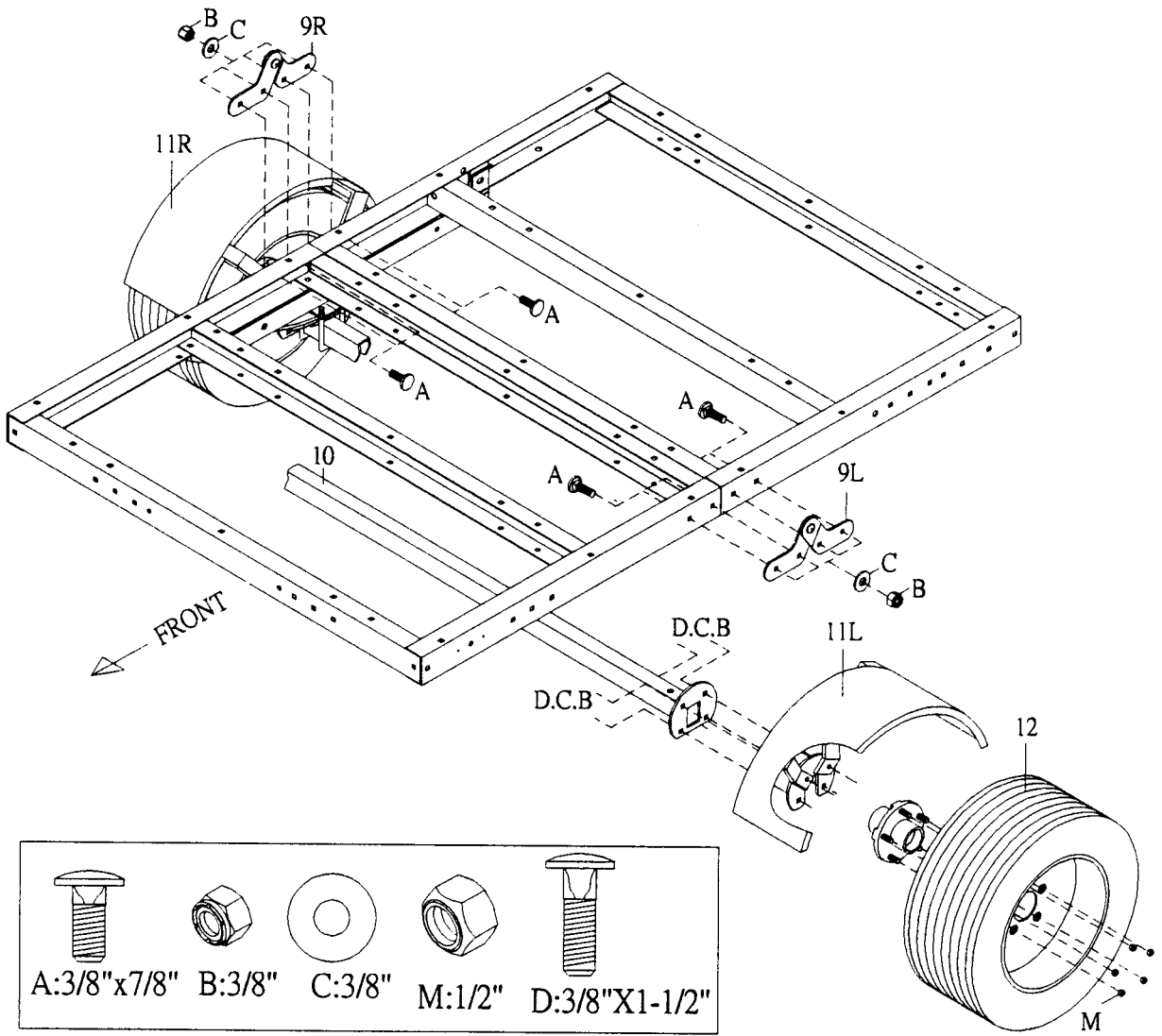
STEP 4

1. Turn over the trailer assembly.
2. Attach spare tire bar (6) and coupler base (15) to connecting rails (5) by using 3/8" x 7/8" carriage bolts (A), 3/8" flat washers (C) and 3/8" nylon nuts (B).
3. Attach safety chain (17) to coupler base (15) as shown, with 3/8" x 1-1/2" carriage bolt (D) by go through the center link of the chain, lock with 3/8" flat washer (C) and 3/8" nut (B).
4. Bolt coupler (14) to coupler base (15), by using 1/2" x 3-3/4" bolts (I), 1/2" washers (L) and 1/2" nylon nuts (K) at side, 1/2" x 1" bolts (J), 1/2" washers (L) and 1/2" nylon nuts (K) at top, then lock coupler trigger by using safety pin (N), put 2 mm "R" pin (Q) through the hole of safety pin to fix it.



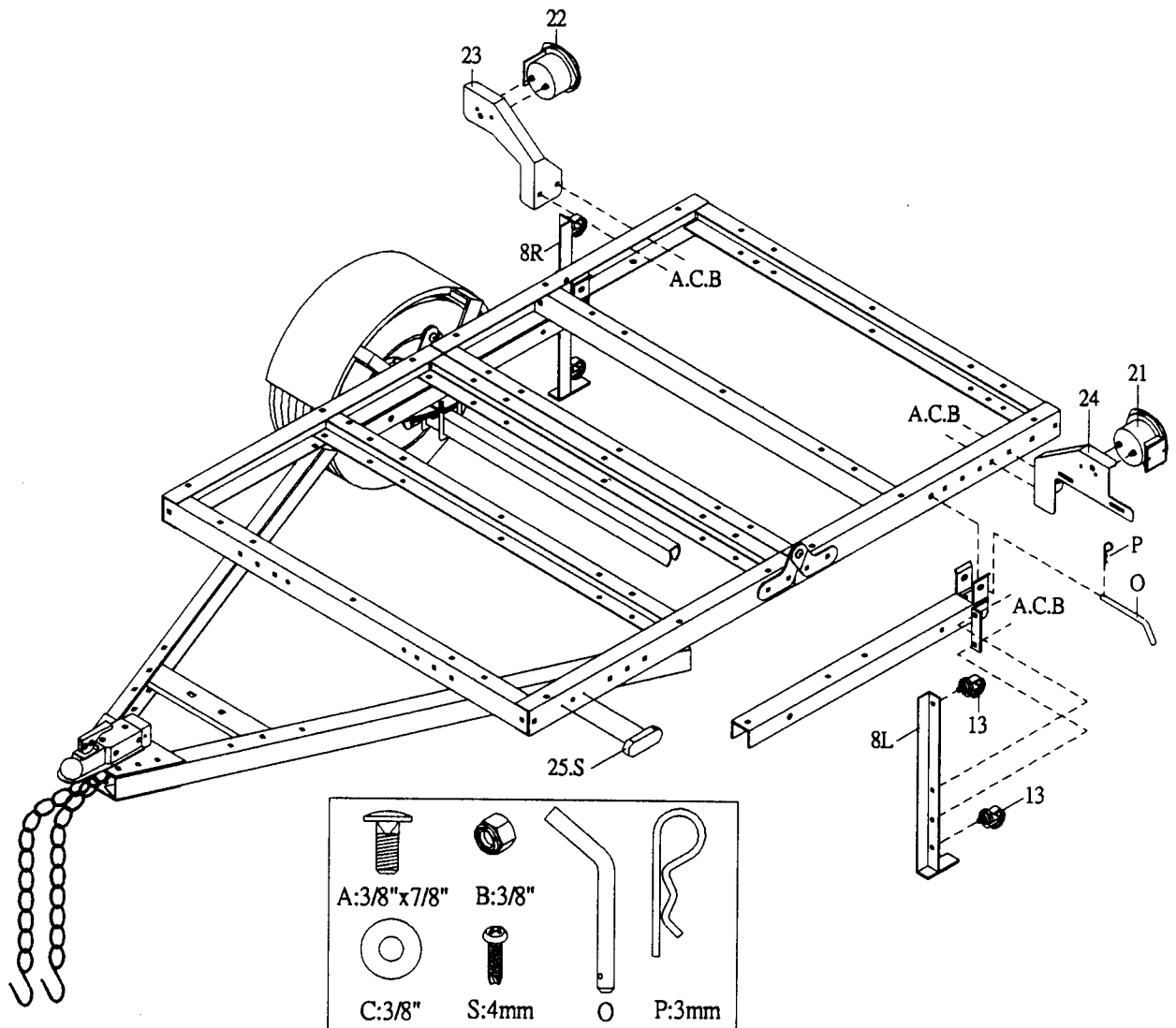
STEP 5

1. Assemble left and right rotation plate (9L, 9R) to front and rear frame (1, 2) by using 3/8" x 7/8" carriage bolts (A), 3/8" flat washers (C) and 3/8" nylon nuts (B). NOTE: Please see the direction of the bolts, as shown in diagram.
2. Assemble left and right fenders (11L, 11R) to the plate on axle by using 3/8" x 1-1/2" carriage bolts (D), 3/8" flat washers (C) and 3/8" nylon nuts (B).
3. Put tire/wheel (12) assembly on hub set (26), then lock with wheel nuts (M) tighten with socket or lug wrench to 90 FT-LBS (VERY TIGHT).



STEP 6

1. Assemble left and right tail light brackets (23, 24) to side rail of rear frame by using 3/8" x 7/8" carriage bolts (A), 3/8" flat washers (C) and 3/8" nylon nuts (B). Install left and right tail lights (21, 22) to the bracket using lights nuts.
2. Open the lens of side running light (25) secure it to side rail of front frame by using 4mm self tapping screw (S).
3. Assemble left and right caster base (8L, 8R) to left and right spring hanger (7L, 7R) by using 3/8" x 7/8" carriage bolts (A), 3/8" flat washers (C) and 3/8" nylon nuts (B). Fix caster to left and right caster base (8L, 8R).
4. Fix the left & right spring hanger (7L, 7R) and rear frame by using 1/2" L latch (O) and 3 mm "R" pin (P).

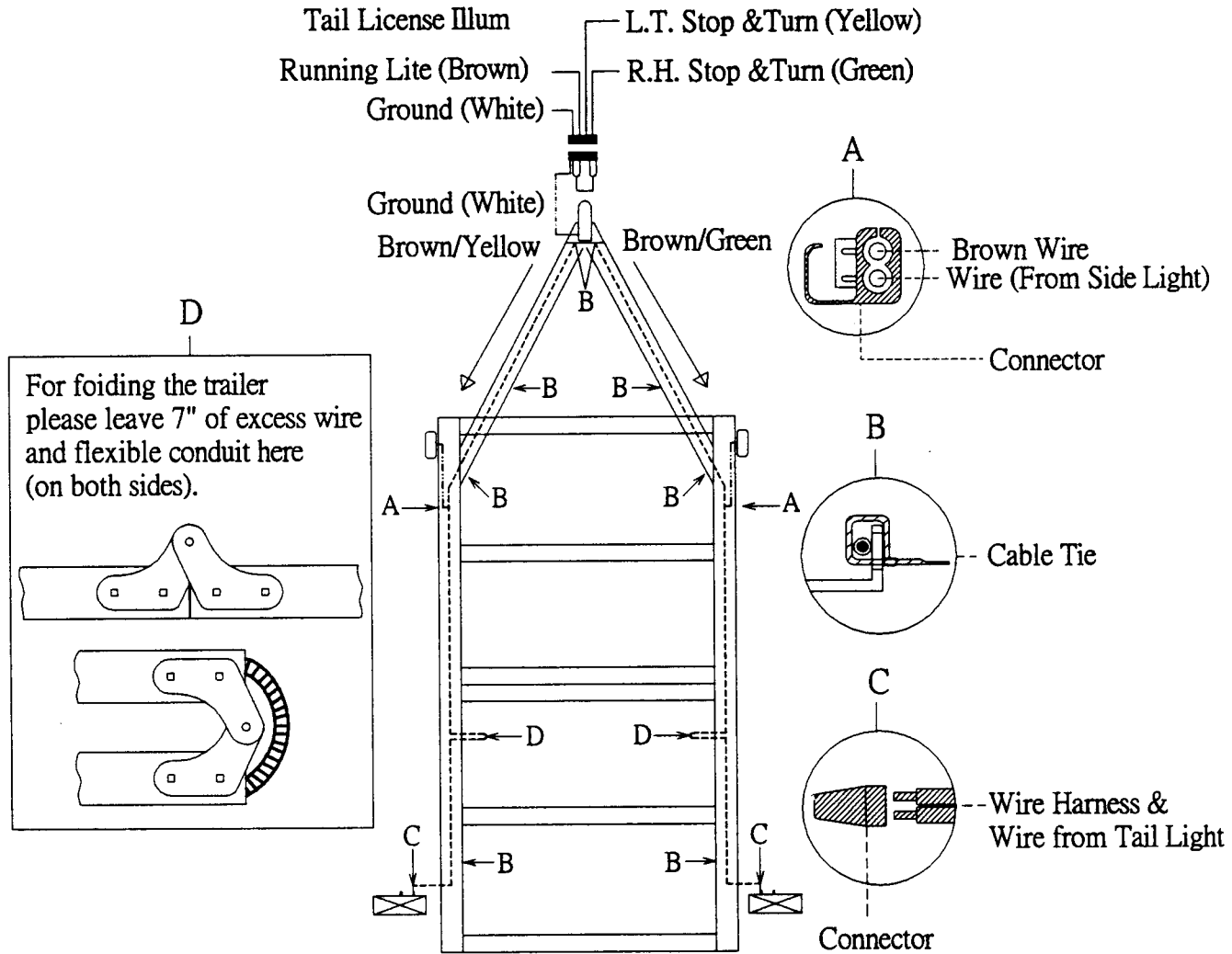


STEP 7

TRAILER LIGHT KIT

WIRING DIAGRAM AND INSTRUCTION

Check alignment of all parts and install the 4-wire vehicle connector in trunk area of your car. Locate the connector plug near the hitch ball and lay out wire. Put the wire harness into the flexible conduit. Connect the brown wire to the tail light by stripping, wrapping and taping connector; similarly connect the yellow wire to the left signal & stop light wire, and the green to the right signal & stop light wire. Some foreign vehicles may require an adaptor to convert their 5 wire system to wire vehicle connector.



1. Attach white ground wire at plug end of wiring harness to the small hole in coupler base with safety tapping screw.
2. Leave about 18" of wire beyond the coupler and lay out wire on the inside of connecting rail and side rail as shown. Push on the wire clips.
3. Connect the wire lead from the running light to the brown wire on each side with the wire connector. Use pliers to squeeze the connector closed. Push on wire clips to hold wires down the rail of the trailer.
4. Cut yellow/brown and green/brown wires to appropriate lengths and strip ends of wires 3/4".
5. Make taillight connections as per color code:

LEFT SIDE

Trailer Wire	Tail Light
Yellow	Red wire
Brown	Two black wires

RIGHT SIDE

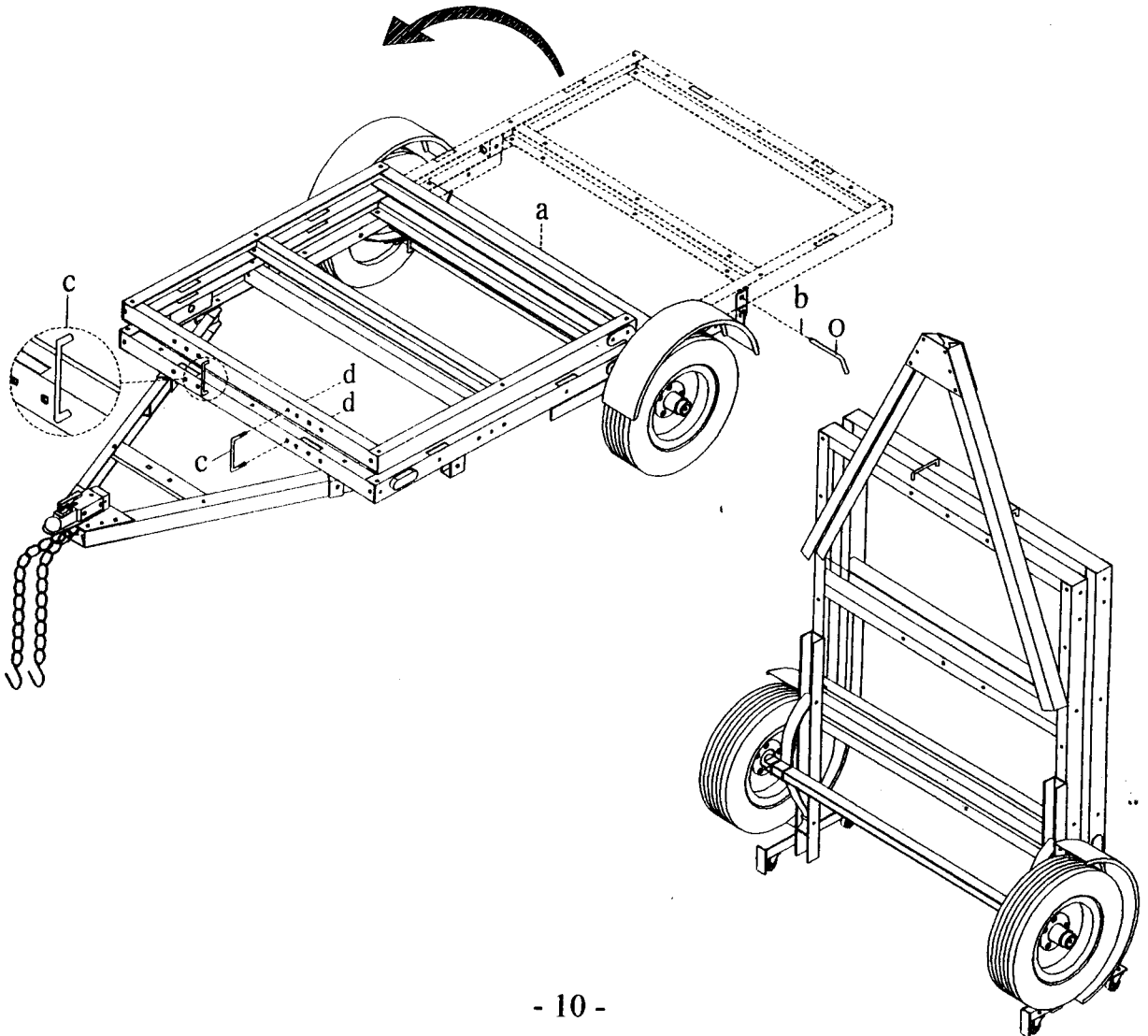
Trailer Wire	Tail Light
Green	Red wire
Brown	Two black wires

STEP 8

1. Unscrew carriage bolts (a) and "L" latch (b) from side rail of rear section. Fold rear section over front section and secure with fixing brackets (c) and nuts (d). NOTE: If there are long time do not fold the rear section, please assemble the rear frame and spring hanger by using 3/8" x 7/8" carriage bolts (A), 3/8" flat washers (C) and 3/8" nylon nuts (B).

WARNING:

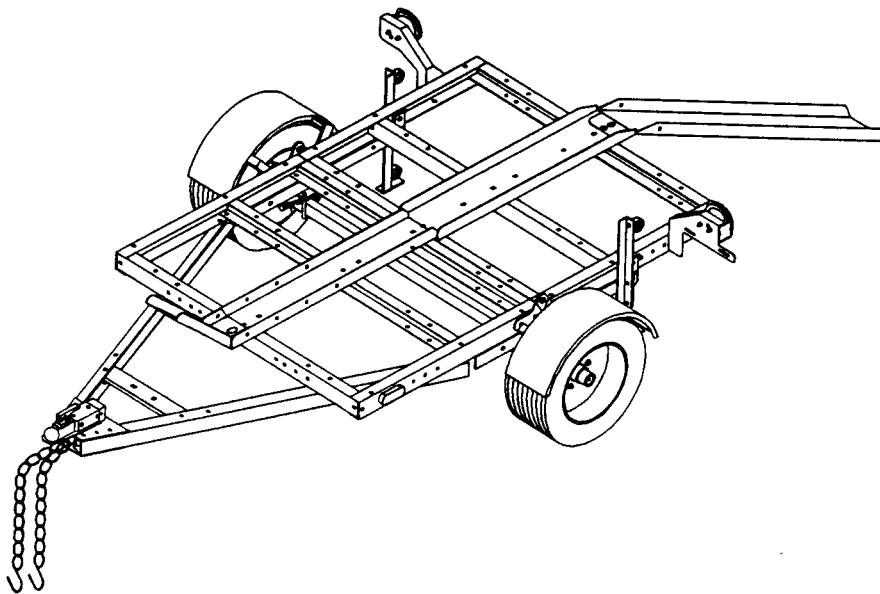
- When lifting and lowering the trailer, it needs at least two persons at all times.
- When moving the trailer, it is important to make sure that the ground is flat and solid.
- When storing the trailer, please make sure to place the trailer against the wall. Then tie the trailer to the wall to prevent it from falling.
- Keep out of reach of children in case the trailer drops.



Available Accessories

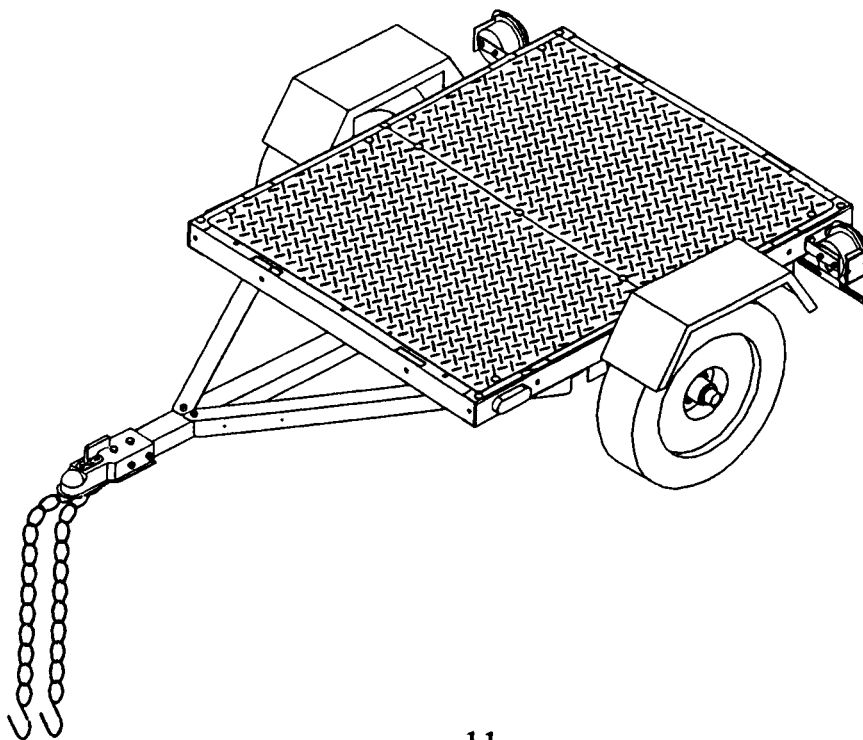
Motorcycle Rail Kit (Not Included)

- Model number TS-76M



Steel Base (Not Included)

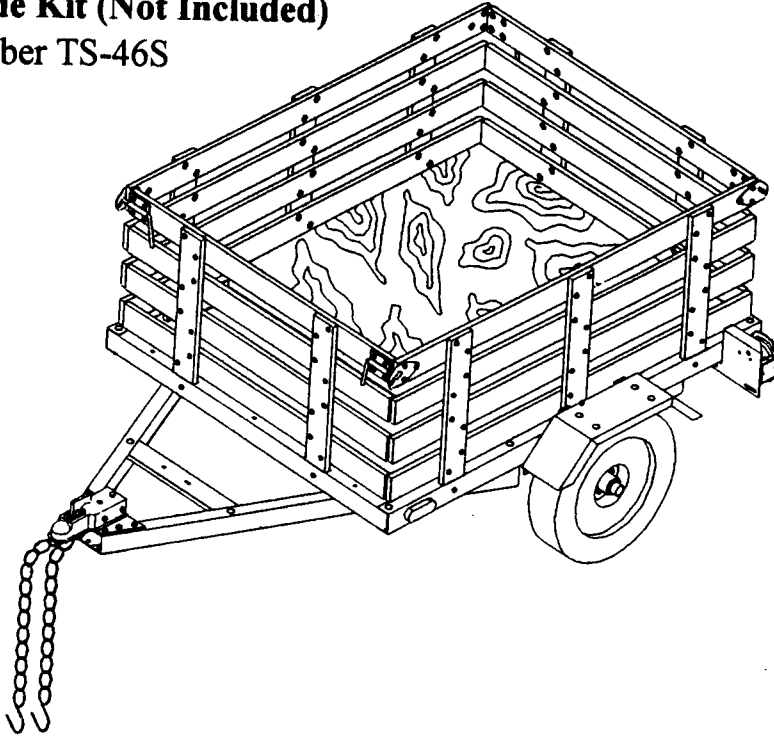
- Model number TS-46SB



Available Accessories

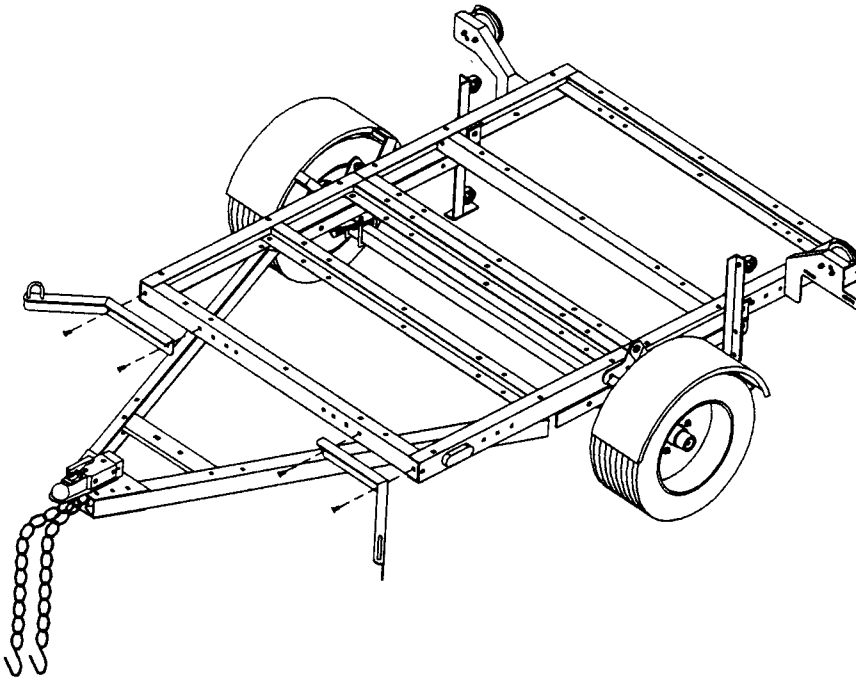
Steel Stake Side Kit (Not Included)

- Model number TS-46S



Tie Down Bracket (Not Included)

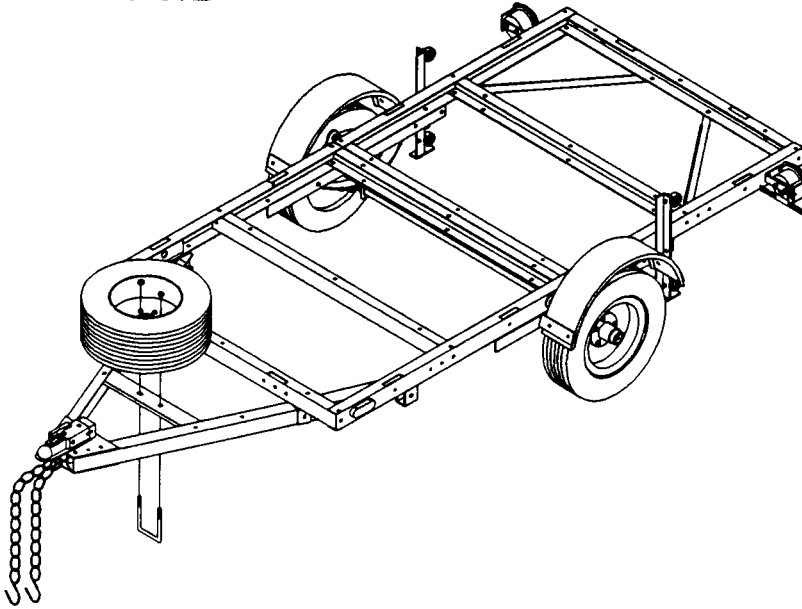
- Model number TS-46TD



Available Accessories

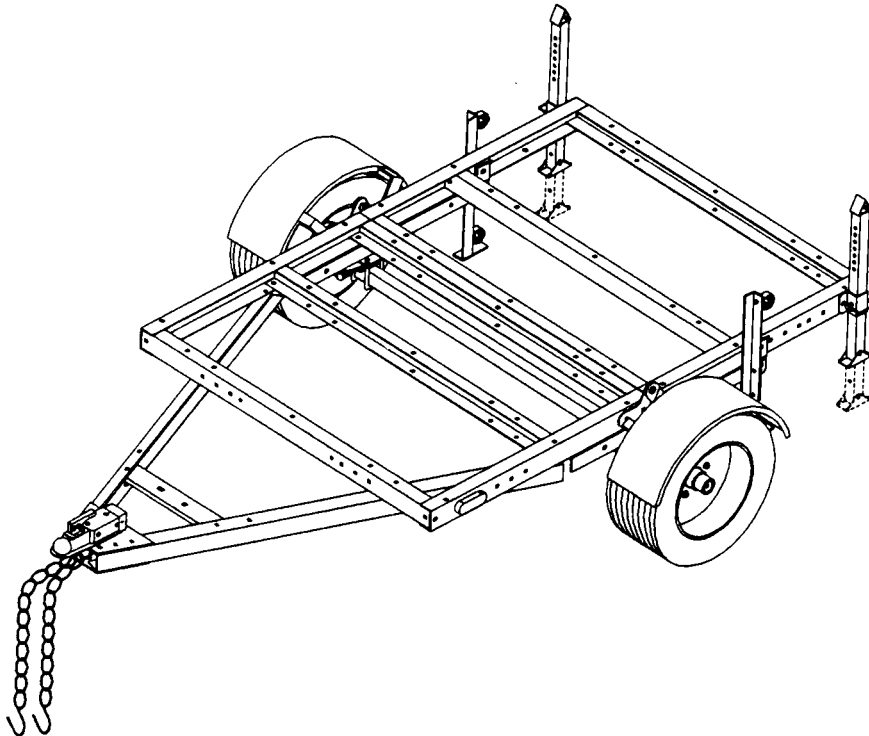
Spare Tire Holder(Not Included)

- Model number TS-67B



Rear Stand (Not Included)

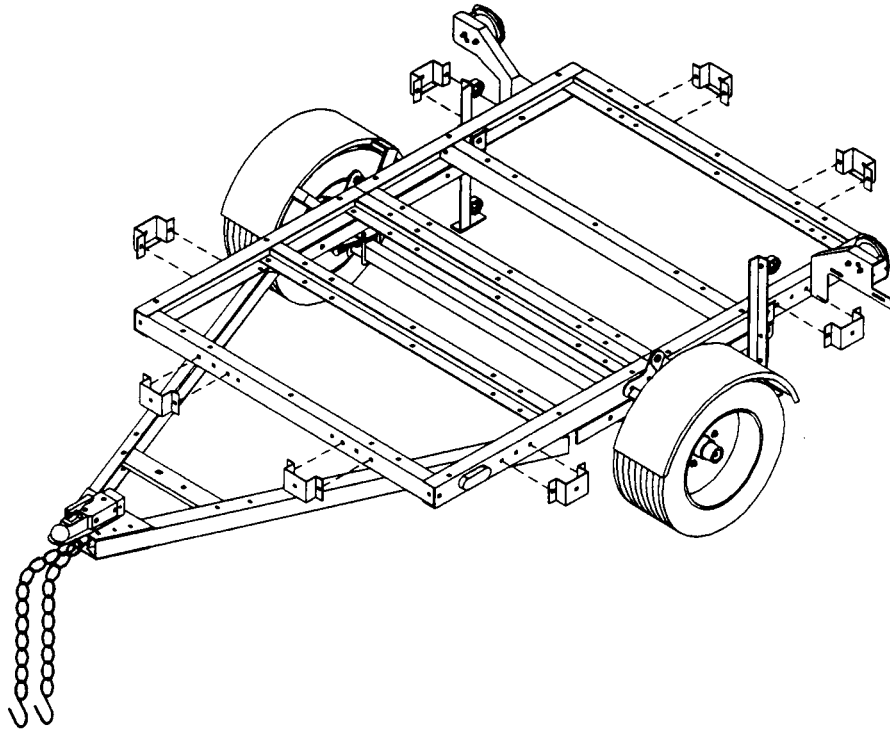
- Model number TS-68G



Available Accessories

Stake Clamp (Not Included)

- Model number TS-79SC

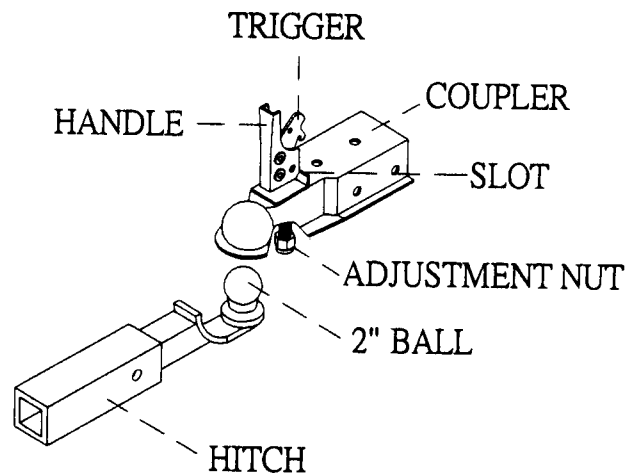
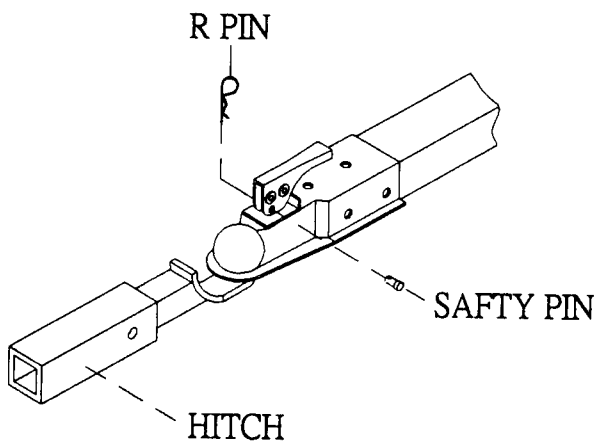


SPECIAL NOTICE FOR COUPLER

Only use a 2" ball hitch on your towing vehicle. Pull trigger and lift handle. Place coupler over trailer hitch ball and push down on handle until trigger locks in slot.

Pull up and down on the coupler to insure the ball is fitting snugly in the coupler. There should be no play between the ball and coupler. If there is play, tighten the adjustment nut until no play is present. If the nut is too tight, the handle will not lock.

NOTE: To reduce friction the ball hitch and coupler, apply a layer of multipurpose lithium grease over ball hitch. Wipe off excess grease when not in use to avoid staining clothes.



TRAILER LICENSING NOTICE

Some states may consider that this trailer kit is specially constructed or homemade vehicle for registration, licensing and/or titling purposes.

The M.C.O. (Manufacturer's Certificate of Origin) supplied with your trailer should be filed out and signed by the dealer transferring ownership to you.

When licensing your trailer, you will need the signed M.C.O. a purchase invoice, cash register receipt, or bill of sale showing the purchase and retail sales tax or use tax collection by the retailer.

Take these to your local Department of Motor Vehicle and upon payment of the appropriate State fees, you will be issued a title, registration and license plate (if required). Some states will require inspection of the assembled and finished trailer kit before issuing a title/registration/license.

If you require additional information or guidance on licensing or titling, please consult your State Department of Motor Vehicle.

SAFE USE AND OPERATION RULES

1. TOWING VEHICLE:

- Make sure vehicle is capable of towing the load.
- Excess speed is the second highest cause of car-trailer accidents. Recommended maximum speed for all passenger cars towing trailers is 45 M.P.H.

2. HITCH, BALL, COUPLER:

- Check that the hitch on the towing vehicle is capable of towing the trailer. The towing capability of the hitch is normally stamped on hitch drawbar.
- Make sure the coupler and the ball are the same sizes and are rated equal to or greater than the load.
- Never attach anything other than the proper size coupler to the ball for towing.

3. SAFETY CHAIN:

- Be sure to use safety chains.
- Check that safety chains are attached to towing vehicle with the same length for each side.
- Do not allow chains to drag on ground.

4. LOADING:

- Never overload trailer. Maximum load is 1,600 LBS.
- Load trailer evenly from side to side with 60% of the load forward of the axle. It is important that the tongue be pressing down on the hitch, but not exceeding a downward force of 160 pounds.
- Reduce weight in car trunk and rear seat areas by amount of tongue weight of your trailer.
- It is against the law to carry passengers in the back of any trailer.

5. LIGHTING:

- Check lighting before each use and every 100 miles to be sure stop tail and turn signals are working properly.
- Replace any broken lenses, reflectors or bulbs.
- Check wires for good connections and possible fraying or wearing of insulation.
- Bulbs supplied with this trailer are for 12 volt system.
- Bulbs used in tail light are: Number 1157 (Stop and tail), 1895 (Side).
- Bulb for clearance is: Number 194.

6. TIRES:

- Check tire for wear and proper inflation before each use and every 100 miles.
- Please keep the tire pressure (PSI), as shown on the tire.
- Check and tighten lug nuts. Torque to 85-90 FT-LBS. Retorque after first 50 miles.

7. OPERATION:

- Know how to properly control your towing vehicle-trailer combination on the highway under all conditions. Remember the loaded weight of the trailer will increase your braking and stopping distance appreciably.
- When towing a trailer over long distance stop and check tightness of all connections lights and running gear every 100 miles.
- Carry emergency flares, and fire extinguisher if required for operation in your state.
- It is desirable to carry extra bulbs and fuses if you are towing the trailer at night over any great distance.

8. MAINTENANCE:

- Check and maintain the trailer, coupler, ball and hitch before each use and every 200 miles.
- Inspect hitch and ball for damage in every day use.
- Ball or hitch can be damaged in parking, hitting curbs, dragging when crossing ditches or railroad tracks.
- Check safety chains for wear and do not allow safety chains to drag on ground.
- To prevent bearing damage, disassemble and repack wheel bearing with a good grade of wheel bearing grease every 1000 miles or yearly.

** If you don't know how to repack wheel bearing, take your trailer to a garage for advice.

IMPORTANT

The purpose of following notices are to give you tips on safe use and operation of your trailer.

1. Please read the instructions carefully and follow them step-by-step for easy assembly, please maintain this instruction in your file.
2. Please double check the assembling step-by-step, be sure each is followed.
3. Be sure to apply for license as required.
4. Before using, please inspect your trailer.

Notice:

- Re-fill grease on bearing after every 1000 miles of use or yearly.
- Keep tire pressure (PSI) as shown on the tire.
- Please insure you comply with the following before using your trailer:
 1. Tighten U-bolts.
 2. Tighten lug nuts.
 3. Tighten trigger lock on coupler.
 4. Hook up safety chain.
 5. Trailer load should not exceed its 1,600 lbs capacity and should be properly secured.
 6. Trailer load size should not exceed trailer's bed board size.

Correct way to load your trailer

